

**Cary High  
CIP 2006 School Building Project  
Project Information**

**Original**

Complete Phase III of the master plan for Cary High. This will include new dining & kitchen, and a 3-story classroom addition that replaces obsolete classroom buildings. This addition will connect to the classroom addition constructed in Phase II. (NOTE: Future completion of the master plan would include replacement of buildings C (1989) & K (1997) with a multi-story building to include Media Center, General Classrooms, Science Labs, Admin, and Student Support Services.)

**Changes from original**

None

**Budget**

<u>Funding Source</u>	<u>Original</u>	<u>Current</u>	<u>Proposed</u>	<u>Change</u>
CIP 2006	\$1,300,000	\$1,300,000	\$1,300,000	\$0

**Schedule**

	<u>Original</u>	<u>Current</u>	<u>Proposed</u>	<u>Change</u>
Occupancy (Phase III)	Aug-14	TBD	TBD	None

**Comments and Future Capital Improvements**

None.

**Historical**

	<u>Completion Date</u>	<u>Description</u>	<u>Amount</u>
CIP 2006	2008	Complete Phase II of the master plan by constructing three-story classroom addition.	\$12,524,213
Plan 2004	2007	Demolish part of Bldg 400 to avoid expensive sprinkler and firewall additions. Renovate for music (band) and art spaces. Construct new health and PE spaces. Repair sprinkler system at main athletic field and provide code upgrades at baseball field. Construct new auditorium. Also, demolish buildings 700, 500.	\$27,749,520
Plan 2000	2003	Replace two boilers and piping; upgrade driveway and parking lot; correct erosion problems.	\$733,215
State Bond	2001	State Bond	\$2,613,050
Phase IIIA	1997	Classroom Addition/Renovation	\$3,849,248

**Construction Cost Estimate for Phase III**

\$22,849,226 as of 10/10/12

**Capacity**

2,223.

**Teaching Spaces**

111.

**Faculty/Staff**

201

**Bus Loading/Parking/Stacking**

Space for 31 buses to park & load.

**Car Parking/Stacking**

**551 spaces required, 563 provided**

Student and Staff Parking Lot – 341 spaces (251 have been assigned to students, 34 student spaces are still available, 11 accessible)

Staff and Visitor Parking along Walnut St – 68 spaces (4 accessible, 27 designated visitor)

Staff Parking near bus entrance on Walnut – 126 spaces (4 accessible)

Staff Parking at 3-story classroom building – 20 spaces (1 accessible)

Phase III will add 8 staff parking spaces (1 accessible)

**Total at the completion of this project will be 571 spaces**

**Car Stacking of 2,214 LF (MSTA requires 1,306LF).**

**Site**

38.39 acres

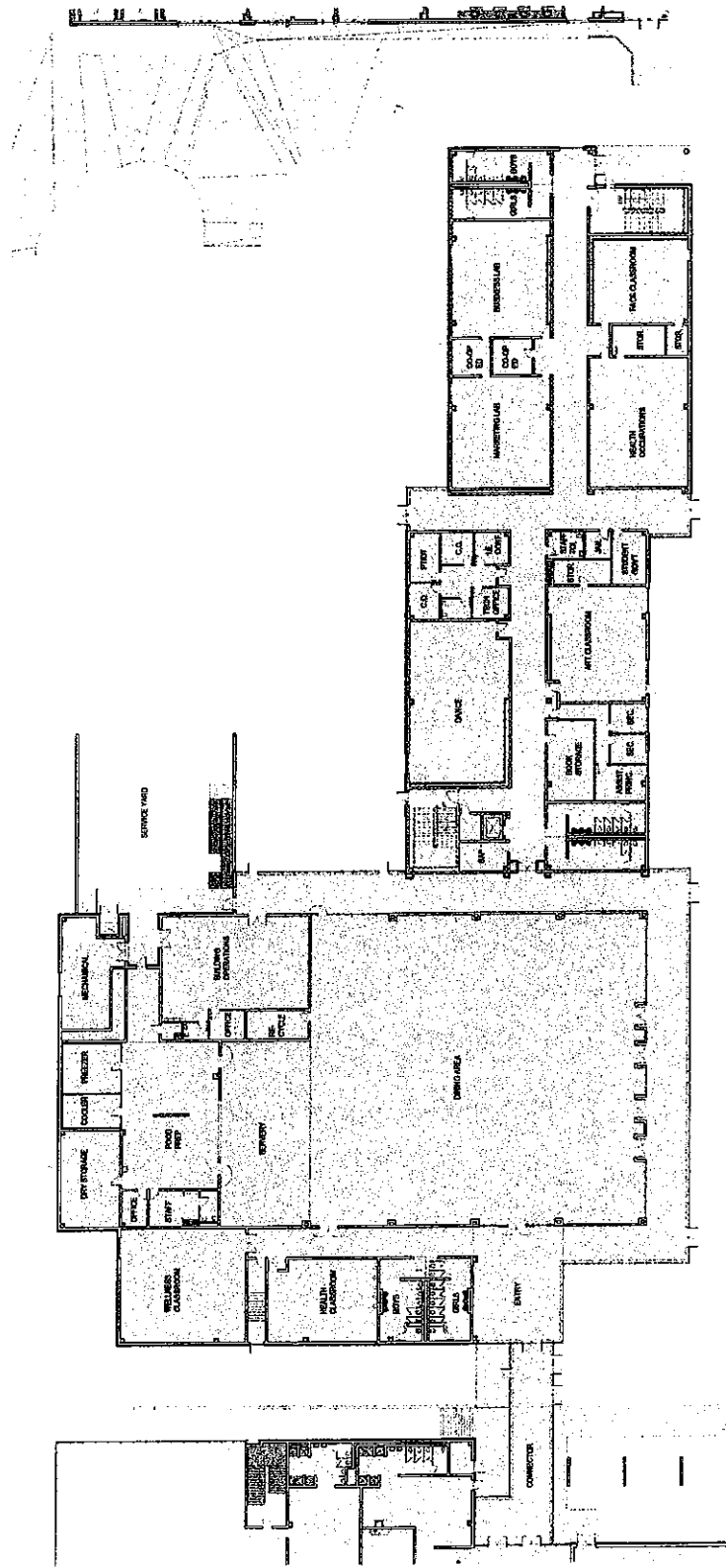
School is located at the corner of Walnut St. and Maynard Rd. in Cary, near Cary Town Center Mall.

No mobiles/modulars existing on site.

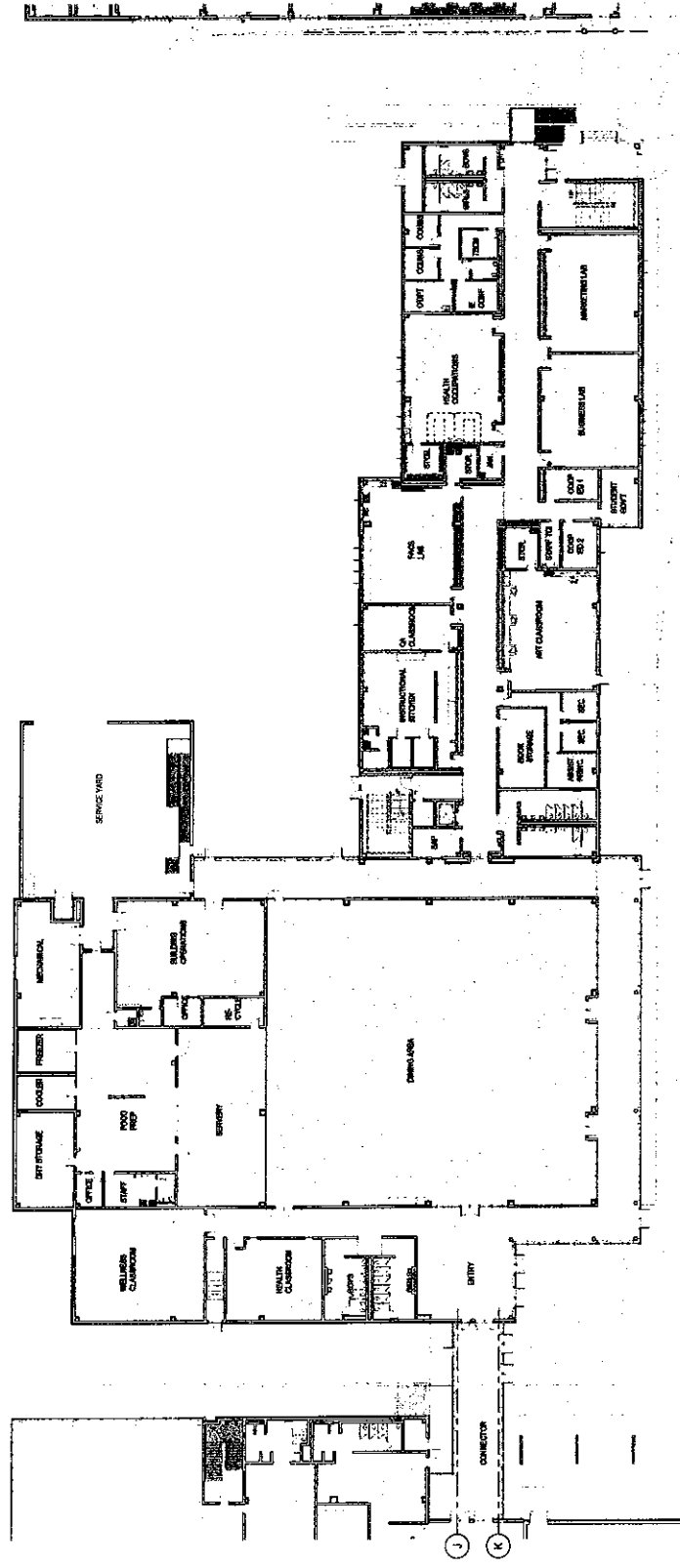
Impervious surface percentage eliminates possibility of placing mobiles/modulars on this site, or additional parking, in the future.



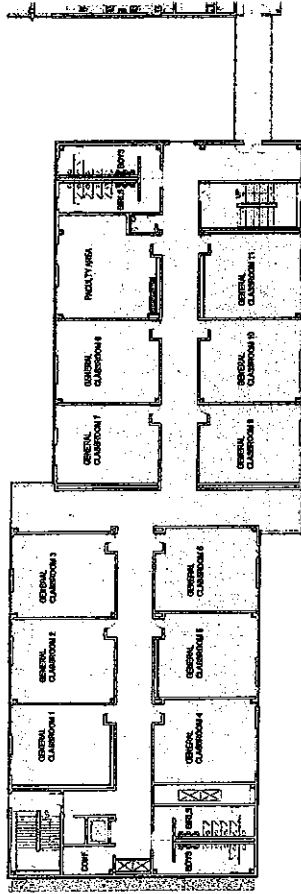
PBC<sub>+</sub>L



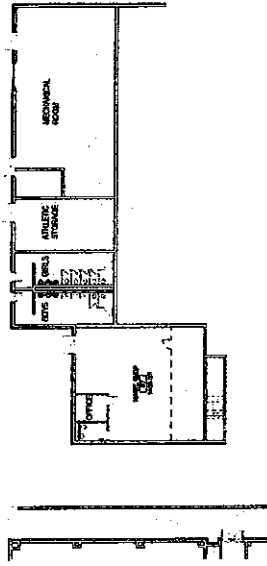
1/LEVEL 1 FLOOR PLAN



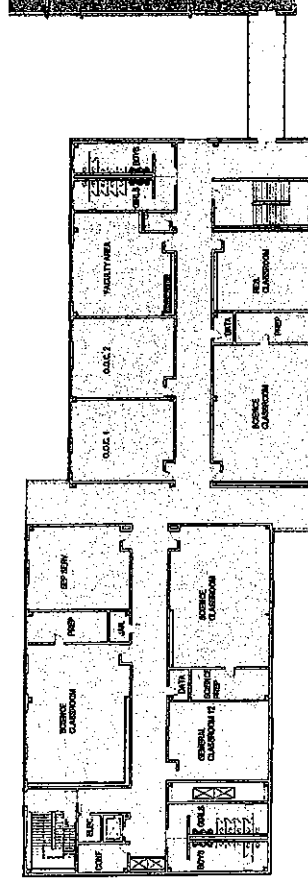
1 | LEVEL 1 FLOOR PLAN (REVISED)



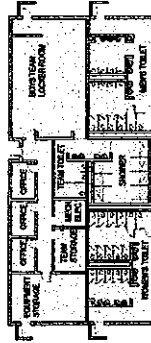
1 | LEVEL 2 FLOOR PLAN



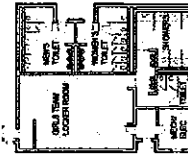
3 | LOWER LEVEL FLOOR PLAN



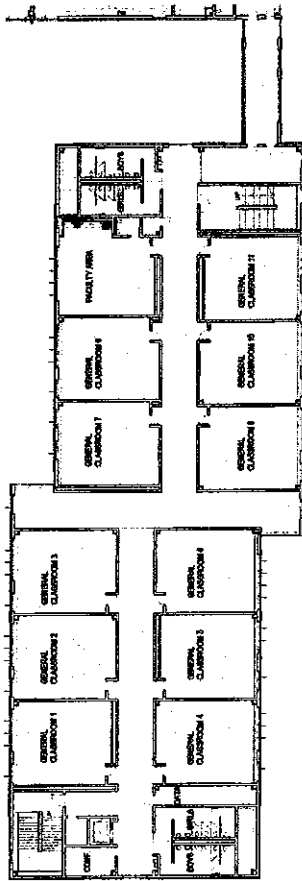
2 | LEVEL 3 FLOOR PLAN



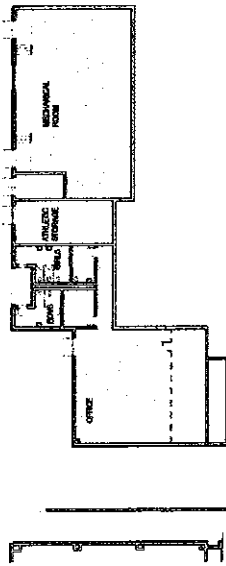
4 | AUXILIARY ATHLETICS FLOOR PLAN - RENOVATION



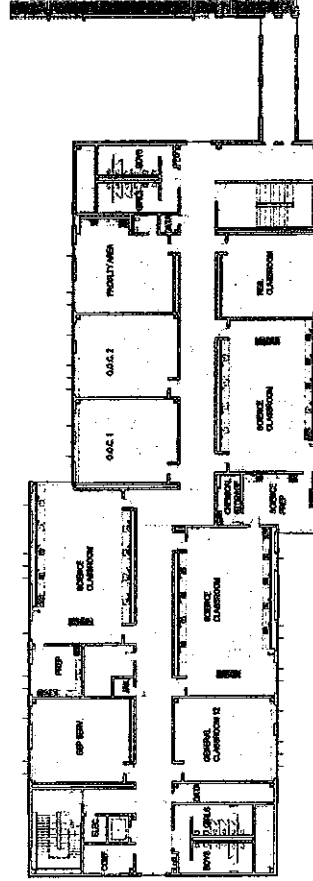
5 | AUXILIARY ATHLETICS FLOOR PLAN - NEW CONSTRUCTION



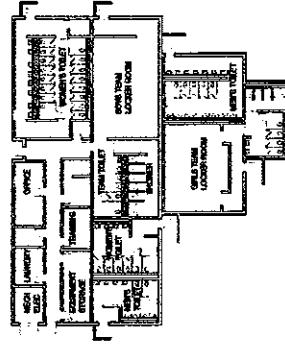
1 | LEVEL 2 FLOOR PLAN



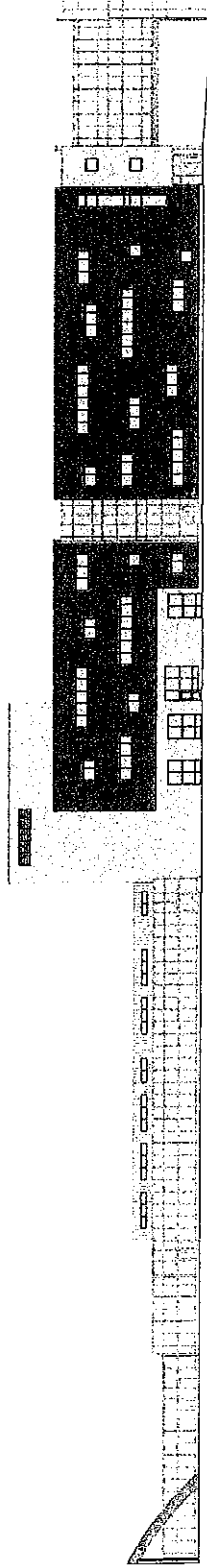
3 | LOWER LEVEL FLOOR PLAN



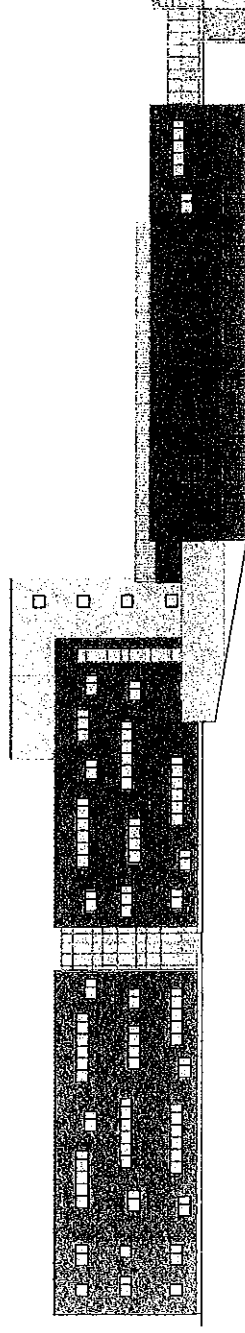
2 | LEVEL 3 FLOOR PLAN (REVISED)



4 | AUXILIARY ATHLETICS FLOOR PLAN -  
RENOVATION (REVISED)



1 | NORTH ELEVATION



2 | SOUTH ELEVATION



3 | EAST ELEVATION



4 | WEST ELEVATION - CLASSROOM



5 | WEST ELEVATION - CAFETERIA





1/3D

PBCL

WAKE COUNTY PUBLIC SCHOOL SYSTEM  
CARY HIGH SCHOOL ADDITIONS & RENOVATIONS

OVER FACING